



# Mission View



*Artist rendering and/or plan may show optional features not included in base price.*

**On Your Lot Home Builder in Washington and Oregon**

[www.TrueBuiltHome.com](http://www.TrueBuiltHome.com)

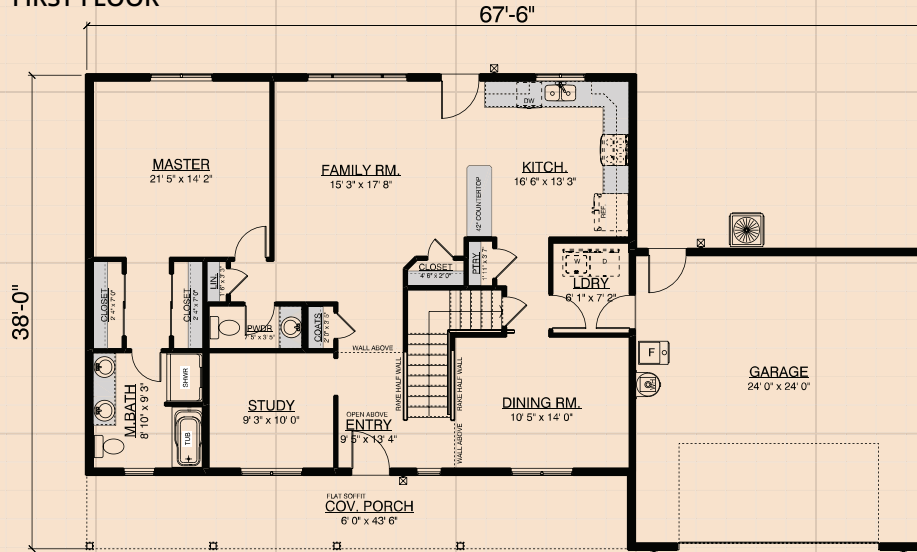


# Mission View

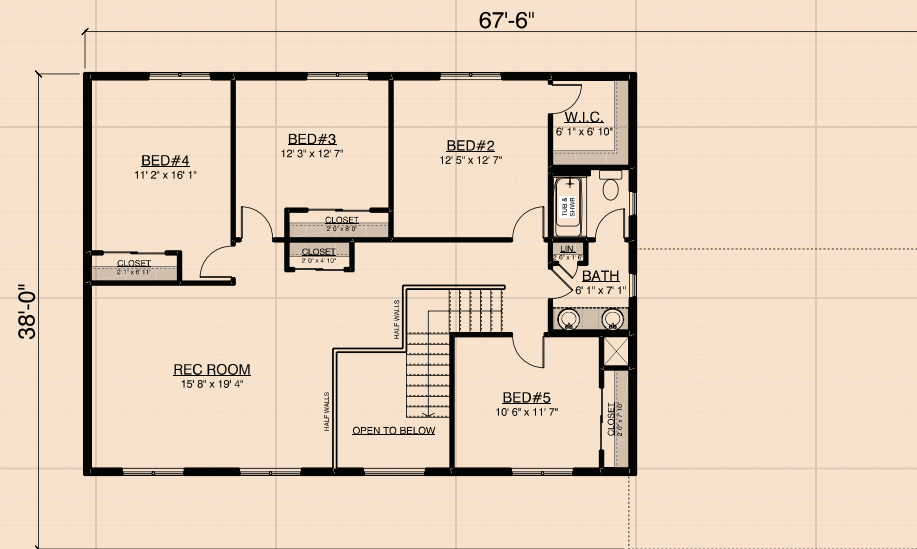
## PLAN DETAILS

Plan Type: Multi-level  
 Bedrooms: 5 Bed  
 Baths: 2.5 Bath  
 Garage: 2 Car  
 Footprint: 67'-6" x 38'  
 Living Area: 2699 sq. ft.  
 Main Floor: 1408 sq. ft.  
 Second Floor: 1291 sq. ft.

## FIRST FLOOR



## SECOND FLOOR



Artist rendering and/or plan may show optional features not included in base price.

On Your Lot Home Builder in Washington and Oregon

[www.TrueBuiltHome.com](http://www.TrueBuiltHome.com)